

# Panasonic

## Time Management Utility

### User's Guide

Model No. **WJ-MPU955**



Before attempting to connect or operate this product,  
please read these instructions carefully and save this manual for future use.

---

# WJ-MPU955 Time Management Utility

*for use with a Network Security System*



## Installation / Configuration

*for System Administrators*

*Installing and using the WJ-MPU955 Time Management Utility*

## Trademarks

Microsoft and Windows are registered trademarks of Microsoft Corporation in the United States and other countries.

Intel and Pentium are registered trademarks of Intel Corporation in the United States and other countries.

Other products and company names mentioned herein may be the trademarks of their respective owners.

# CONTENTS

<b>CONTENTS</b>	<b>3</b>
<b>WELCOME</b>	<b>5</b>
INTRODUCTION	5
DOCUMENT CONVENTIONS	5
<b>WHAT AND HOW?</b>	<b>7</b>
WHAT IT DOES	7
HOW IT WORKS	7
Installation	7
<b>INSTALL</b>	<b>9</b>
PLATFORM	9
Minimum Hardware Requirements	9
Operating System Requirements	9
Recommended Display Settings	9
INSTALLATION	10
<b>OPERATION</b>	<b>11</b>
Toolbar	12
PC Time Setup	13
Verify Local PC Settings	13
<i>Date and Time</i>	13
<i>Time Zone</i>	14
PC Adjustments	14
Setting Main CPU IPA	15
NSS Setup	16
Verify CPU settings	16
<i>Date/Time Properties</i>	16
Changing Main CPU	17
<i>Set Date/Time</i>	17
<i>Transfer Settings</i>	18
<b>UNINSTALL</b>	<b>19</b>
<b>GLOSSARY</b>	<b>21</b>
ACRONYMS	21
TERMS	22
<b>INDEX</b>	<b>25</b>



Intentionally blank.

# WELCOME

## INTRODUCTION

Welcome to the MPU955\* Time Management Utility. This document will guide you in the process of installing the software as well as configuration and updating the Network Security System (NSS) with the desired date, time, and time zone settings.

This guide provides step-by-step installation and configuration instructions as well as an explanation of how the system will react under certain conditions.

## DOCUMENT CONVENTIONS

This guide uses the following conventions when describing the use and operation of this product.

Keys with name consisting of more than one character appear within brackets, as in [Alt], or [Enter]. Do not type the brackets; simply press the indicated key.

When you see [Alt]key, or [Shift]key or [Ctrl]key in this guide, press and hold down the [Alt], [Shift], or [Ctrl] key while you press the specified key. Then release both keys. For example, to enter [Ctrl]A, press the [Ctrl] key and enter the letter “A” key simultaneously.

Some keyboards have a [Return] key rather than an [Enter] key. This guide uses [Enter] to indicate both.

Function Keys are the “F” keys along the top of your keyboard. This document refers to Function Keys by putting brackets around the key such as [F1] for the “F1” key.

Within the windows environment, there are often several ways to select an option. For example, to select OK, you can do any of the following:

- Click on OK or the check mark with the mouse.
- Press [Alt]O

---

\* Throughout this document, MPU955 refers to WJ-MPU955.

- 
- Press [Enter]

This document uses the terms select, type or enter to indicate any of these actions and can be performed using several instruments such as:

- PC keyboard: Using the menu items at the top of the application as an alternate to the toolbar which can only be accessed by using the mouse. Press [Alt] and the desired menu item letter indicated by an underscore. Such as [Alt]F to access the file menu, or [Alt]E to access the edit menu. Then use the arrow keys to get to the desired menu item, followed by [Enter]. Any of the field settings can be accessed with the keyboard by pressing [Tab] until the desired field is highlighted. Make changes as necessary by typing numbers, or using the arrow keys.
- Mouse: Use the mouse to navigate to the desired button, menu item or to modify any field.

This Document also uses unique text formatting to describe various features, capabilities, or problems, described below:

This box will refer you to a different section with instructions for tasks that should be performed before going onto the current section.

**\* Warning: Text with this appearance suggests potential problems or situations that you might encounter when attempting to do something in this utility.**

**◆ Note: Text with this appearance is a special instruction, rule or side comment related to the topic.**

**• Tip: Text with this appearance offers suggestions or hints to make using this utility easier.**

# WHAT AND HOW?

## WHAT IT DOES

The Time Management Utility (TMU) enables an administrator and other users to set the date and time of the NSS. This document guides the process of installing and configuring these properties using this utility.

## HOW IT WORKS

Initially, and periodically, it will be necessary for an administrator to set the date and time of the NSS. The date and time settings within the NSS will dictate what is displayed on a monitor OSD (on-screen display) which is viewed by security surveillance operators.

### Installation

The MPU955 Time Management Utility software is very simple to install and only takes a few minutes. There are a series of Windows dialog boxes to guide the installation onto the hard drive of a PC.





Intentionally blank.

# INSTALL

Installing the MPU955 Time Management Utility means copying program files onto the hard-drive of a dedicated PC from a CD-ROM.

## PLATFORM

As with any PC application that must be reliable, there should be little other than MPU955 utilities running on the same computer. The MPU955 Time Management Utility operates independently of other MPU955 utilities.

The PC should have the following characteristics:

### Minimum Hardware Requirements

PC with an Intel® Pentium® III processor

16 MB RAM

6 MB free hard drive space.

10/100 Mbps Ethernet network interface card using TCP/IP

CD-ROM drive

### Operating System Requirements

- Microsoft® Windows® (English Version)  
98SE, 2000 Professional SP4, or XP Professional SP1a

### Recommended Display Settings

- 256 colors
- 800 x 600 resolution

---

## INSTALLATION

1. Insert the MPU955 CD-ROM into the CD-ROM drive on your computer – an installation menu will appear
2. Select Time Management Utility and click the **Next** button – MPU955 TMU will begin installing automatically
3. Respond to the dialog boxes by following the directions given

---

# OPERATION

The NSS is configured in three phases:

1. Set the PC date, time, and TIME ZONE parameters.
2. Configure TMU date, time and optional time zone.
3. Transfer the settings to the NSS and verify.

It will be important for the administrator to understand the settings for a specific region and make adjustments accordingly. Because the time and date setting may be used more frequently than time zone setting, tab sections are provided giving the administrator the flexibility of separating the actions.

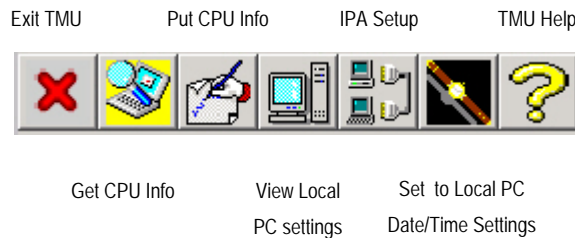
◆ **Note: This utility is limited to date settings between 1/1/1998 and 12/31/2068.**

The MPU955 Time Management Utility allows for manual NSS adjustments without changing the Windows settings.

---

## Toolbar

The MPU955 Time Management Utility toolbar allows convenient updating of the system CPUs. The buttons change function depending on whether the Main A or B CPU is selected and on whether the Date / Time or Set Time Zone tab is selected



**Exit TMU:** Closes the MPU955 Time Management Utility application.

**Get CPU Info:** Retrieves the current Date/Time or Time Zone information from the selected system CPU (Main A or Main B) depending on the tabbed section selected.

**Put CPU Info:** Transfers the displayed Date/Time or Time Zone information from the TMU application to the selected system CPU (Main A or Main B) depending on the tabbed section selected.

**View Local PC Settings:** Refreshes the TMU to display the Date/Time or Time Zone information retrieved from the local PC clock.

**IPA Setup:** Opens the IPA setup window that will allow you to change the IP address of the Main A and/or Main B system CPUs.

**Set to Local PC Date/Time Settings:** Changes the TMU displayed Date/Time settings to match the local PC (Quick set).

**TMU Help:** Opens the help for information regarding the MPU955 Time Management Utility.

- **Tip:** Alternate methods to access the help file: press [F1] or use the Help menu.

## PC Time Setup

This utility uses the Windows calendar and clock of the local PC for displaying the current date, time, and time zone information. If the date, time and/or time zone information is not correct, it may be adjusted through the standard windows calendar/clock and time zone utility. Verification of these settings is very important for the Quick Set function. *Refer to the Windows documentation provided with the PC for settings instructions.*

## VERIFY LOCAL PC SETTINGS

Verification of the local settings is important for the Quick Set update method of the Date, Time and Time Zone settings in the system CPU. The local settings will be displayed in **red**. The administrator can easily configure the system CPU by using the Quick Set adjustment feature.

However, in the case of service personnel who travel with a PC and do not wish to continually change local PC settings, manual configuration is available.

### Date and Time

When the TMU is launched, the utility will display the Date / Time tab indicating current date and time settings of the local PC in **red**.

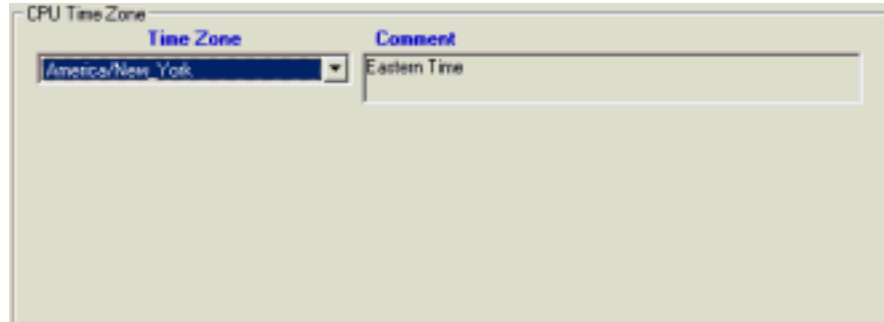


November 2003						
Sun	Mon	Tue	Wed	Thu	Fri	Sat
44						1
45	2	3	4	5	6	7
46	8	9	10	11	12	13
47	14	15	16	17	18	19
48	20	21	22	23	24	25
49	26	27	28	29	30	1

---

## Time Zone

Initially, when the TMU is launched and the Time Zone tab is selected, there will be no time zone selected. Select a Time Zone from the drop-down list, and then click the “Put to CPU” button.



## Resetting the Main CPU

After putting the Time Zone to the main CPU, each CPU needs to be rebooted so that the updated information is registered correctly. Verify that you wish to reset the CPU by clicking “Yes” when asked if you wish to reset the CPU.

If you are not able to reset the CPU at that time, select the “Reset” tab, click the red “Reset” button, and click “Yes” to confirm the reset of the CPU when it is convenient to do so.

## PC ADJUSTMENTS

If any of the settings for the local PC are incorrect, make adjustments using the time zone settings in the standard Windows Clock and Calendar. These settings can be viewed by the date/time within the Windows Control Panel. *See the Windows operation guide supplied with your PC for more detailed information.*



If PC adjustments have been made, click “**View Local PC Settings**” button. This will refresh the displayed PC settings, again colored in **red**.

◆ **Note:** If the changes to the PC settings are not reflected, close the application and re-open to refresh the Local PC settings.

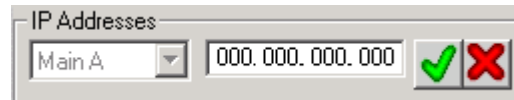
## Setting Main CPU IPA

The IP address of the main CPU(s) must be set before any transfer or adjustments can be made to the NSS. Follow the steps below in order to make such adjustments. Ask your installer or network administrator for the IPA of the Main A and Main B CPUs.

1. Open the MPU955 Time Management Utility.



Configure the CPU IP addresses.



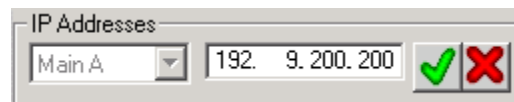
For first time operation, the Main CPU IP address will not be set. The administrator must enter the correct IPA for the system CPU(s).

2. Make sure Main A is displayed in the drop-down list.
3. Click the "IPA Setup" button in the toolbar.

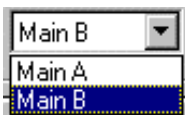


- **Tip: Double-click on the IP address displayed to open the IPA setup window as a shortcut.**

The Main A IP address setup window will appear.



4. Enter the correct IP address.
5. Click the green check mark to save, the red X to cancel.



FOR REDUNDANT CPU

6. Choose Main B from the drop-down list.
7. Click the "IPA Setup" button in the toolbar.
8. Repeat steps 4 and 5 for Main B CPU.



---

## NSS Setup

### VERIFY CPU SETTINGS

In order to view the settings that exist within the system CPU(s), the administrator must perform a “Get CPU Info”. This action will interrogate the system and return the current values for time, date and time zone of the desired CPU. Each time this button is used, time, date and time zone information is retrieved all at once, regardless of which tab section is selected. Follow the steps below for retrieving this information.

#### Date/Time Properties

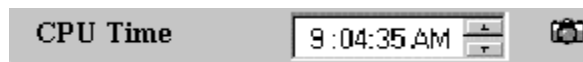
1. Make sure that the desired Main CPU (A or B) is displayed in the drop-down list.
2. If the Date/Time tab is not selected, click on the tab to bring the Date/Time adjustments window to the front.
3. Click on the “Get CPU Info” button.



This will display the current date and time settings within the NSS system CPU selected. The gray circle in the calendar represents the current date within the selected CPU after performing the “GET”.

November 2003						
Sun	Mon	Tue	Wed	Thu	Fri	Sat
44						1
45	2	3	4	5	6	7
46	8	9	10	11	12	13
47	14	15	16	17	18	19
	20	21	22			

Also, a camera icon will display on the right side of the CPU time window indicating a snapshot has been taken of the selected CPU when a “get” is performed.



Compare the Local settings with the CPU settings and determine if any adjustment should be made.

## CHANGING MAIN CPU

### Set Date/Time

#### Quick Set

To change the TMU Date/Time settings to match the PC, perform the following steps:

1. Verify the PC Date and Time settings.

See **Verify Local PC Settings** section on page 13.



2. Click the "Set to Local PC Date/Time Settings" button.
3. Verify the Date and Time settings match the PC settings.
4. Proceed to transfer the settings to the system CPU(s), see "Transfer Settings" below.

#### Manual

To manually change the CPU date and time settings, perform the following steps:

1. Click the desired date on the calendar.

The selected date will be highlighted in gray.



2. Click on the CPU Time clock hour.



3. Adjust by clicking the up or down arrows to advance the hour by increments of one.

- **Tip: You may highlight a time section and type in the desired hour.**

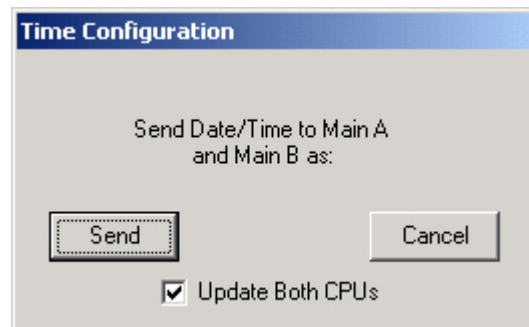
4. Adjust the minutes, seconds and AM/PM in the same manner.
5. Proceed to transfer the settings to the system CPU(s), see "Transfer Settings" below.

---

## Transfer Settings

After the desired adjustments have been made to the TMU settings, it is necessary to transfer the settings to the system CPU(s).

1. Verify the settings displayed on the screen are correct.
2. Make sure that Main A (or Main B) is displayed in the drop-down list.
3. Click the "PUT CPU Info" button in the toolbar.



4. Check or uncheck the "Update Both CPUs" box.

If your system includes two Main CPUs, it is recommended that this box be checked, to ensure that the CPUs are set to the same time. The CPUs may be set separately, if desired, by repeating this procedure for each CPU.

If your system includes only one Main CPU, it is not necessary to check this box.

5. Click the "Send".

Verify the message in the bottom status bar reads "CPU Update Successful!" If this message does not appear, or an error message occurs, the transfer did not take place. Contact your service personnel.

6. Click the "Get CPU Info" button to verify the settings.

# UNINSTALL

To uninstall the MPU955 Time Management Utility, use **Add/Remove Programs** on **Control Panel**.



Intentionally blank.

# GLOSSARY

## ACRONYMS

**CD** – compact disk

**CPU** – central processing unit, part of an NSS

**DST** – daylight saving time

**IP** – Internet protocol

**IPA** – Internet protocol address

**MCPU** – main central processing unit, part of the NSS specified as A or B

**NSS** – network security system

**OSD** – on-screen display

**PC** – personal computer

**TCP/IP** – transmission control protocol / Internet protocol

**TMU** – MPU955 Time Management Utility

---

## TERMS

**admin console** – a PC-based Graphical User Interface (GUI) that facilitates the interaction between an NSS (Network Security System) and a system administrator.

**backup CPU** – same as redundant CPU.

**central processing unit (CPU)** – that part of a Network Security System (NSS) that controls the functioning of the entire system. If the status is active, it is the Main CPU; if in standby, it is the Redundant (or Backup) CPU.

**daylight saving time** – the time observed when daylight saving is adopted in a community.

**Ethernet** – a local-area network protocol featuring a bus topology.

**Internet protocol (IP) address** – a unique 32-bit identifier for a specific TCP/IP computer or other device (such as a printer) on a network. IP addresses are in dotted decimal form, with each of the four address fields assigned a value from 0 to 255. Example: 128.127.50.224

**local PC** – computer on which the MPU955 Time Management Utility is installed.

**monitor** – a display device dedicated to viewing images generated by one or more of the components of surveillance system.

**network security system (NSS)** – Large-scale matrix system which performs functions such as camera control, switching, automatic alarm processing, and provides on-screen display.

**redundant CPU** – a central processing unit in the “standby” mode, ready to take control of the entire system upon command from the CPU management switch. After taking control of the system, the redundant CPU becomes the active CPU.

**system administrator** – a person who manages a network system by: configuring system hardware, programming system features, monitoring system status, controlling overall system operation, and reviewing system logs.

**TCP/IP** – a communications protocol for computer networks, the main protocol for the internet.

**time zone** – one of the regions or divisions of the globe approximately coinciding with meridians.

**user** – a human (operator) who accesses the system, selects resources, and controls successfully selected system resources.





Intentionally blank.

# INDEX

Acronyms .....	21	Operation	
Configure		local date/time .....	13
CPU settings .....	16	local settings .....	13
phases .....	11	pc time setup .....	13
CPU changing		system setup .....	16
manual date/time .....	17	Requirements	
quick set date/time .....	17	hardware .....	9
CPU Settings.....	16	operating system.....	9
verify.....	16	Platform.....	9
Glossary		Resetting the Main CPU.....	14
Acronyms.....	21	Settings	
Terms .....	22	CPU .....	16
Installation		system .....	16
display settings.....	9	transfer .....	18
hardware requirements .....	9	utility .....	15
Install .....	9	System Setup.....	16
Introduction .....	7	Terms .....	22
OS requirements .....	9	Time Zone .....	14
Local Date/Time		Toolbar .....	12
verify.....	13	Transfer Settings .....	18
operation .....	11	Utility Setup .....	15



**For U.S., Canadian and Puerto Rican fields:**

**Panasonic System Solutions Company,**  
Unit Company of Panasonic Corporation of North America

**Security Systems**  
[www.panasonic.com/security](http://www.panasonic.com/security)  
For customer support, call 1.877.733.3689

**Executive Office:** Three Panasonic Way 2H-2, Secaucus, New Jersey 07094

**Zone Office**

**Eastern:** Three Panasonic Way, Secaucus, New Jersey 07094

**Central:** 1707 N. Randal Road, Elgin, IL 60123

**Southern:** 1225 Northbrook Parkway, Suwanee, GA 30024

**Western:** 6550 Katella Ave., Cypress, CA 90630

**Panasonic Canada Inc.**

5770 Ambler Drive, Mississauga,  
Ontario, L4W 2T3 Canada (905)624-5010  
<http://www.panasonic.ca>

**Panasonic Sales Company**

Division of Panasonic Puerto Rico Inc.  
San Gabriel Industrial Park 65th Infantry Ave. KM. 9.5 Carolina  
P.R. 00985(809)750-4300

**For European and other fields:**

**Matsushita Electric Industrial Co., Ltd.**

Osaka, Japan  
<http://panasonic.net>